



www.surfbayholidays.co.uk



Welcome

Surf Bay Holidays is a family run business that operate 3 award winning holiday parks in stunning coastal and countryside locations in Devon & Cornwall.

Our park's cater for families and couples in quality, self catering caravan holiday homes, apartments and lodges.

We are committed to giving exceptional customer service and are dedicated to providing the highest standards in all of our holiday homes. If you fancy joining us on a more regular basis, two of our park's provide superb opportunities for holiday home ownership meaning you're free to escape from it all at the drop of a hat!

No matter what your idea of the perfect holiday is, you can book with confidence when you stay at one of our park's, safe in the knowledge that you've found your ideal destination.

We look forward to seeing you.

Michael Taylor, Managing Director



Westward Ho! Devon 6 - 11

Fantastic views of Westward Ho! Beach & the Atlantic from the comfort of your holiday home.



Westward Ho! Devon 12 - 17

The park boasts it's own access to the glorious beach of Westward Ho! which is just a few minutes walk away.



Relubbus, Cornwall 20 - 23

23 acres of partly wooded park, situated along the banks of a clear, shallow stream in Relubbus, Penzance.

DEVON

‘Outstanding beauty & breathtaking countryside’



The ideal destination

Whether you are looking for a family holiday, somewhere quiet to relax or romantic weekends away, Devon has something for everyone and is a popular holiday location owing to it's glorious coastline.

You'll find a cluster of seaside towns and villages that provide great scenery and some of Britain's best surfing on blue flag beaches.

Enjoy family day's out at fantastic local attractions, discover quaint fishing villages, take leisurely strolls along miles of golden sand and be spoilt for choice with award winning local food and drink.

Visit the galleries and art festivals, try your hand at local crafts and escape the hustle and bustle of everyday life.

Whatever your reason for visiting Devon, it's the perfect place to do the things you love with the people you love and the reason why so many visitors return year after year.

4



5



Our gently sloping park is right on the seafront and is superbly presented. All of our holiday homes are positioned to ensure they have the best possible view of the coastline and the Atlantic beyond.

Take advantage of our location, benefit from quick and easy access to the sandy beach of Westward Ho! which is renowned for being one of the safest bathing beaches in the country, or simply relax and listen to the sea as it crashes on the rocks after an enjoyable day sightseeing.

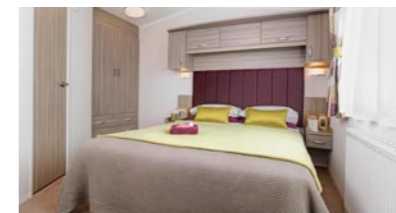
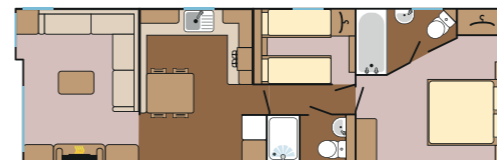
This beautiful, convenient setting, alongside excellent accommodation ensures that your holiday is perfectly relaxing. Beachside Holiday Park is the ideal location to take in the wonders of the West Country.

Our park is just a stone's throw away from the family resort of Westward Ho! which boasts excellent facilities and amenities and it's also close to outstanding cliff top scenery, coastal paths, countryside and many family attractions.

Holiday Homes

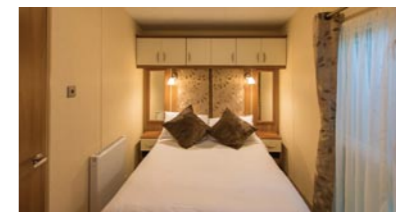
Swan 37 Sleeps 4 - 6

- Main bedroom & Twin bedroom · Double glazing
- Central heating · TV & DVD player
- Bluetooth speaker · Dishwasher · Microwave
- Toaster · En-suite with bath & overhead shower
- Shower room · Fold out double bed in lounge
- Pillows, duvets & bed linen



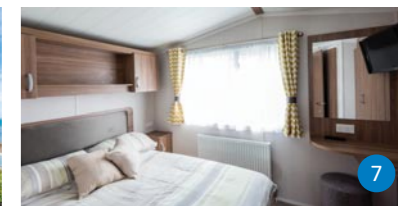
Swan 32 / Plus Sleeps 4 - 6

- Main bedroom & Twin bedroom · Double glazing
- Central heating · TV & DVD player · Bluetooth speaker
- Microwave · Toaster · Shower room
- Fold out double bed in lounge
- En-suite WC · Pillows, duvets & bed linen
- Decking & hot tub on Plus models
- Access available via ramp on some accommodation
- Decking available on some standard Swan 32's



Puffin / Plus Sleeps 4 - 6

- Main bedroom & Twin bedroom
- Double glazing · Central heating · TV & DVD player
- Bluetooth speaker · Microwave · Toaster
- Shower room · Fold out double bed in lounge
- En-suite WC · Pillows, duvets & bed linen
- Covered decking · Hot tub (on Plus models)



Floorplans are representative and may vary.

Heron Sleeps 6 - 8

- Main bedroom & 2 x Twin bedrooms
- Double glazing · Central heating · Bluetooth speaker
- TV · DVD player · Microwave · Toaster
- Separate WC · Fold out double bed in lounge
- Shower room · Pillows & duvets
- Bed linen is available to hire



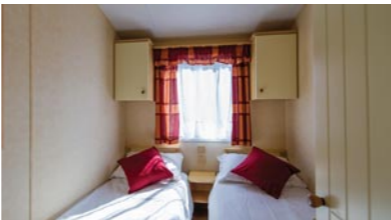
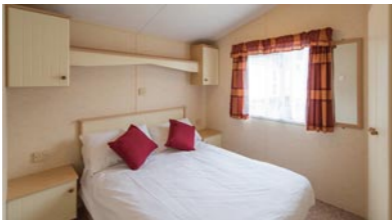
Seagull Sleeps 2 - 4

- Main bedroom · Double glazing · Central heating
- TV · Microwave · Toaster · Shower room
- Fold out double bed in lounge
- Pillows & duvets
- Bed linen is available to hire
- Some pet friendly units available



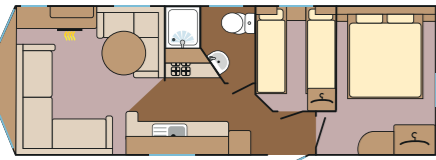
Lapwing/Lapwing EW Sleeps 4 - 6

- Main bedroom & Twin bedroom · Double glazing (Lapwing EW) · Central heating (Lapwing EW)
- Plinth heaters (Lapwing) · TV · Microwave · Toaster
- Shower room · Fold out double bed in lounge
- Pillows & duvets · Bed linen is available to hire
- Some pet friendly units available



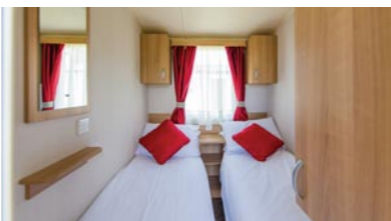
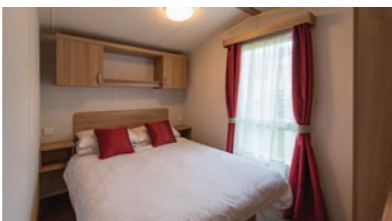
Sandpiper Sleeps 4 - 6

- Main bedroom & Twin bedroom · Plinth heaters
- TV · Microwave · Toaster
- Shower room · Fold out double bed in lounge
- Pillows & duvets · Bed linen is available to hire



8

Floorplans are representative and may vary.



New for 2019 - Curlew Plus Pods Sleeps 2 - 4

Our new Curlew Plus pods are quirky, contemporary and a fantastic addition to the park. These terrific pods can comfortably accommodate a family of four. The lounge/dining area can be converted into a double bed and there is also a stylish mezzanine that is accessed via a small ladder* that boasts twin beds that can be pushed together to make a double. Although the mezzanine offers limited head space, it provides an extremely comfortable and well ventilated sleeping area. The Curlew Plus has everything that you would expect in a modern holiday home and is perfect for those of you that are looking for something that is just that little bit different.

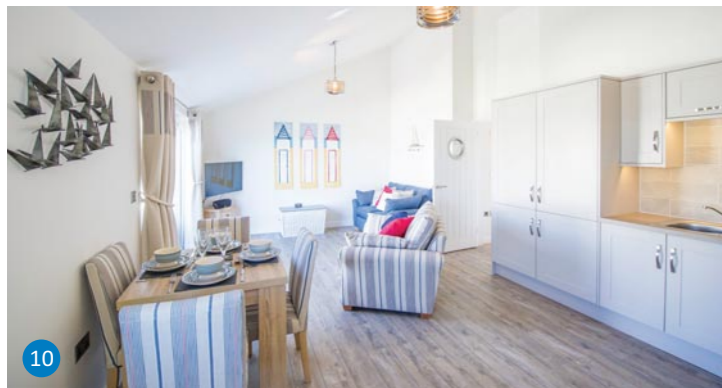
- Twin room in mezzanine, Pull out double bed
- Central heating · Double glazing · TV & DVD Player · Microwave
- Bluetooth speaker · Toaster · Shower room
- Pillows, duvets & bed linen · Decking with hot tub

* Please ensure that those using the ladder are competent to do so.



9

Floorplans are representative and may vary.



Apartments

Our stunning 2 & 3 bedroom apartments offer the best of the best and have been tastefully designed and furnished with everything you could possibly wish for and more.

- Waterfront & Waterside: Main bedroom & Twin bedroom · Driftwood & Sea Breeze: Main bedroom & 2 x twin bedrooms
- Double glazing · Central heating · 42" Smart TV with Netflix · 32" TV/DVD player in bedrooms · Bluetooth speaker
- Jacuzzi bath · Hairdryer · Linen & towels · En-suite shower room · Complimentary toiletries · Complimentary tea/coffee
- Dishwasher · Microwave · Balconies with fantastic sea views · Hot tub (on Driftwood)



Enquire
about holiday
home ownership



Ideally located, Surf Bay is an award winning family park with room to relax and space to breathe.

We have our own private access to 600 acres of Northam Country Park and the safe sandy beach of Westward Ho! which offers stunning views and beautiful sunsets.

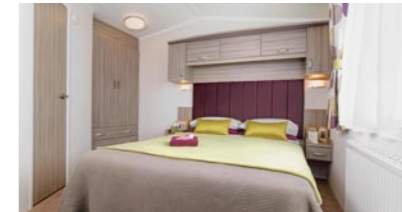
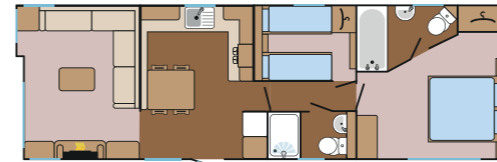
The beach provides some of the best water sports opportunities along the North Devon coast and body boarding is a must! We are also less than a minutes drive away from the Royal North Devon Golf Course which is the oldest in England.

A short walk away is the village of Westward Ho! with shops, cafés, family friendly restaurants and bars. Take a stroll along the promenade or sit on the village green and enjoy a famous Hockings ice cream. Children will love the many family attractions within a short distance or why not enjoy a daytrip by boat to Lundy Island, see the seals and puffins in a place of outstanding beauty or if you're not an adventure seeker, simply stretch out with a good book, catch some sun and relax...

Holiday Homes

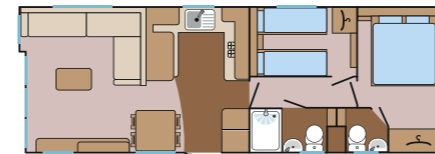
Kingfisher 37 Sleeps 4 - 6

- Main bedroom & Twin bedroom · Double glazing
- Central heating · TV & DVD player
- Bluetooth speaker · Dishwasher · Microwave
- Toaster · En-suite with bath & overhead shower
- Shower room · Fold out double bed in lounge
- Pillows, duvets & bed linen



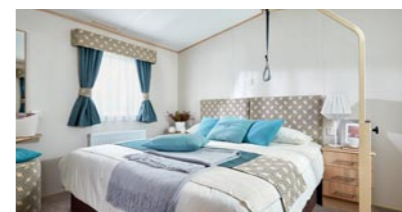
Kingfisher 32 / Plus Sleeps 4 - 6

- Main bedroom & Twin bedroom · Double glazing
- Central heating · TV & DVD player
- Bluetooth speaker · Microwave · Toaster
- Shower room · En-suite WC
- Fold out double bed in lounge
- Pillows, duvets & bed linen
- Hot tub (on Plus models)



Albatross W/A Sleeps 4 - 6

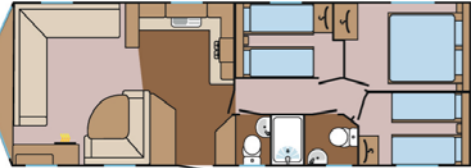
- Main bedroom & Twin bedroom · Double glazing
- Central heating · TV · Microwave · Toaster
- Bed grab bar in main bedroom · 'Wet room'
- Handrails · Wider exterior doors & corridors
- Lower units, switches, sockets & appliance controls
- Fold out double bed in lounge
- Pillows, duvets & bed linen · Pet friendly



Floorplans are representative and may vary.

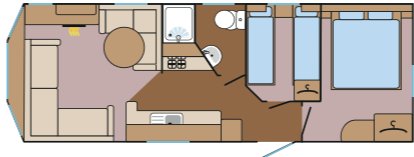
Albatross Sleeps 6 - 8

- Main bedroom & 2 Twin bedrooms
- Plinth heaters · TV · Microwave · Toaster
- Shower room · Separate WC
- Fold out double bed in lounge
- Pillows & duvets
- Bed linen is available to hire
- Some pet friendly units available



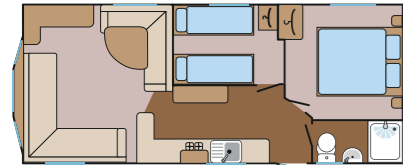
Pipit Sleeps 4 - 6

- Main bedroom & Twin bedroom
- Plinth heaters · TV · Microwave · Toaster
- Shower room
- Fold out double bed in lounge
- Pillows & duvets · Bed linen is available to hire
- Some pet friendly units available



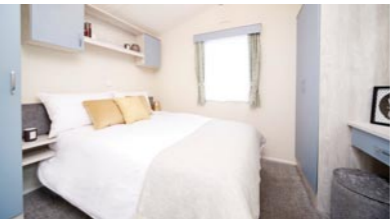
Osprey Sleeps 4 - 6

- Main bedroom & Twin bedroom
- Plinth heaters · TV · Microwave · Toaster
- Shower room
- Fold out double bed in lounge
- Pillows & duvets · Bed linen is available to hire



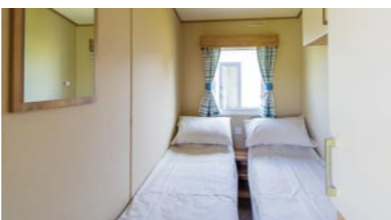
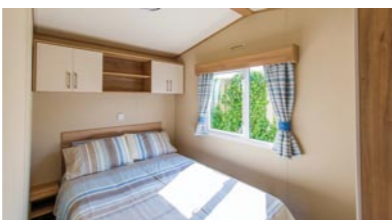
Kittiwake Sleeps 2 - 4

- Main bedroom
- Double glazing · Central heating · TV
- Microwave · Toaster · Shower room
- Fold out double bed in lounge
- Pillows & duvets
- Bed linen is available to hire



Oyster Catcher Sleeps 6 - 8

- Main bedroom & 2 Twin bedrooms
- Plinth heaters · TV · Microwave · Toaster
- Shower room
- Fold out double bed in lounge
- Pillows & duvets · Bed linen is available to hire





Apartments

Our luxury holiday apartments cater for up to 6 people and offer a stress free, family holiday with some extra special comforts to help you relax.

- Pebble Ridge & Sandymere: Main bedroom & Twin bedroom
- Beachcomber & Breakwater: Main bedroom & 2 x twin bedrooms • Double glazing
- Underfloor heating • 42" Smart TV with Netflix • Bluetooth speaker
- 32" TV/DVD player in bedrooms • Jacuzzi bath • En-suite shower room
- Hairdryer • Linen & towels • Complimentary toiletries
- Complimentary tea/coffee • Dishwasher • Microwave
- Balconies with fantastic views • Hot tub (on Pebble Ridge & Sandymere)



Cornwall

‘A land of mystery & legend’



The perfect holiday retreat

The unique culture, spectacular landscape and mild climate of Cornwall make it one of the UK's most popular holiday destinations.

Cornwall is well loved for many reasons. From its dramatic coastline and spectacular beaches to rolling moorlands, dotted with ancient standing stones and ruined tin mines. Nestled amongst the rugged cliffs and traditional fishing villages, the beautiful beaches with pounding waves create a natural playground for surfers and a variety of other water sports.

The illustrious local cuisine, including Cornish pasties and cream teas (jam first, then cream!) has been enriched with award winning food producers, Michelin Star restaurants and stellar chefs, putting Cornwall firmly on the gourmet map.

From Lands' End to the Lizard to Tintagel, Cornwall's stunning coastal walks are famous for their wild beauty, whilst the enchanting fishing villages and harbours offer an insight into the history of the local area. Visit Newlyn fish market for the catch of the day, or stop off in St Ives, home of numerous art galleries. With so much to see and do, it's easy to see why Cornwall is the perfect holiday destination.





River Valley Country Park is an oasis of calm. Set within 23 acres of green countryside, it is the perfect location to forget the hustle and bustle of modern life. Our partially wooded park is situated in a picturesque Cornish valley, only a short drive from St Michaels Mount and both north and south coasts, with their sandy beaches. The gentle flow of the stream invites you to relax whilst you take in the peaceful countryside environment, whilst nearby there are striking cliffs, granite moorlands, wooded valleys and spectacular wildlife. The park has been awarded a prestigious David Bellamy Gold Award for nature conservation, a great reflection on the ethos of the park. Whether you are attracted by the peace and quiet, the nearby coastline or the bustling fishing harbours, you will want to return to River Valley time and again for stress free holidays throughout the year.

Holiday Homes

New for 2019 - Larch Lodge Plus Sleeps 6

Our beautiful three bedroom Larch Plus lodges can comfortably accommodate a family of six and offer a modern and stylish open plan living space, all your home comforts and extravagant luxuries. There is also a private decked area where you can enjoy outdoor living and a hot tub which is situated in a delightful secluded location. No matter what you choose to do during your stay in these spectacular lodges, you'll be doing it in style!

- Main bedroom & 2 Twin bedrooms • Double glazing
- Central heating • TV & DVD player • Bluetooth speaker • Microwave
- Toaster • Dishwasher • Bathroom with bath & overhead shower
- En-suite shower room • Pillows, duvets & bed linen • Decking • Hot tub



Cedar Lodge Plus Sleeps 4

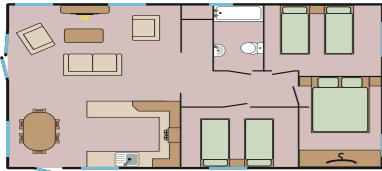
- Main bedroom & Twin bedroom • Double glazing
- Central heating • TV & DVD player • Bluetooth speaker
- Dishwasher • Microwave • Toaster • Wine cooler
- En-suite with bath and overhead shower
- Shower room • Pillows & duvets with bed linen
- Hot tub • Decking



Floorplans are representative and may vary.

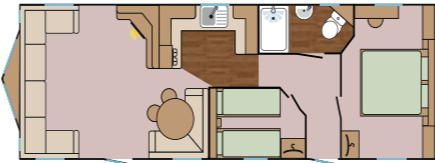
Oak / Oak Lodge Plus Sleeps 6

- Main bedroom & 2 Twin bedrooms · Double glazing
- Central heating · TV & DVD player
- Bluetooth speaker · Dishwasher · Microwave
- Toaster · Bathroom with bath & overhead shower
- Pillows & duvets with bed linen
- Hot tub (in Plus models) · Decking
- Some pet friendly units available



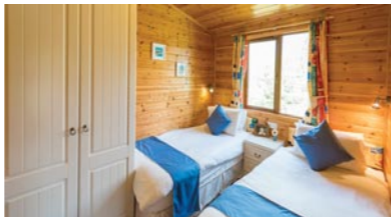
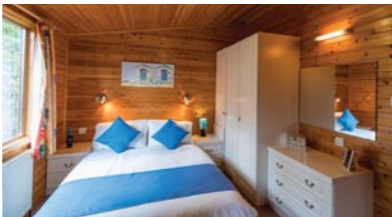
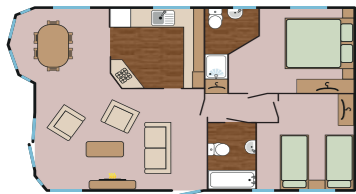
Cormorant Sleeps 4

- Main bedroom & Twin bedroom · Double glazing
- Central heating · TV & DVD player
- Bluetooth speaker · Dishwasher · Microwave
- Toaster · Interconnecting shower room
- Pillows & duvets · Bed linen is available to hire
- Pet friendly



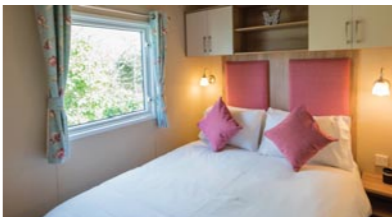
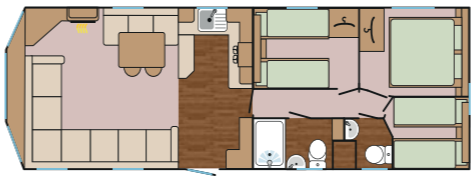
Maple Lodge Plus Sleeps 4

- Main bedroom & Twin bedroom · Double glazing
- Central heating · TV & DVD player · Bluetooth speaker
- Dishwasher · Microwave · Toaster
- Bathroom with bath & overhead shower
- En-suite shower room
- Pillows & duvets with bed linen · Hot tub · Decking



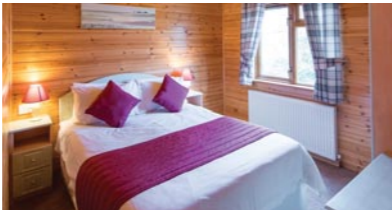
Kestrel / Kite / Plus Sleeps 6

- Main bedroom & 2 Twin bedrooms
- Double glazing · Central heating · TV
- Microwave · Toaster · Shower room · Separate WC
- Pillows & duvets · Bed linen is available to hire
- Hot tub (on Plus model)
- Some pet friendly units available (Kite accommodation)



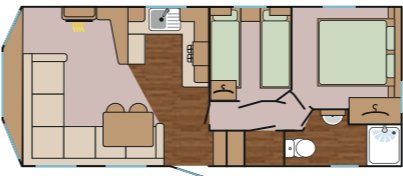
Birch Lodge Plus Sleeps 4

- Main bedroom & Twin bedroom · Double glazing
- Central heating · TV & DVD player
- Bluetooth speaker · Dishwasher · Microwave
- Toaster · Bathroom with bath & overhead shower
- Pillows & duvets with bed linen
- Hot tub · Decking with canopy



Kingfisher / Swallow Sleeps 4

- Main bedroom & 1 Twin bedroom
- Double glazing · Central heating · TV & DVD player
- Microwave · Toaster · Shower room
- Pillows & duvets · Bed linen is available to hire
- Some pet friendly units available



Floorplans are representative and may vary.

Floorplans are representative and may vary.

